

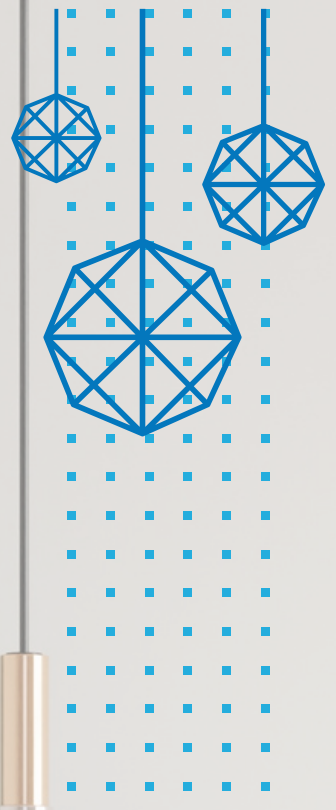
Essential Package

“Every Home Deserves Designer’s Brush”



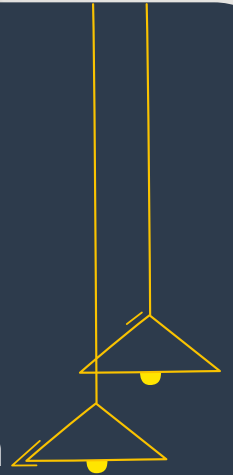
Features

- Quick Option
- Dedicated Designer throughout
- Allocated Site Visits
- Coordination with your Contractors
- Stage-based Payment Plan
- Customizable Inclusions
- The flexibility of 1 room up to a full house



Inclusions

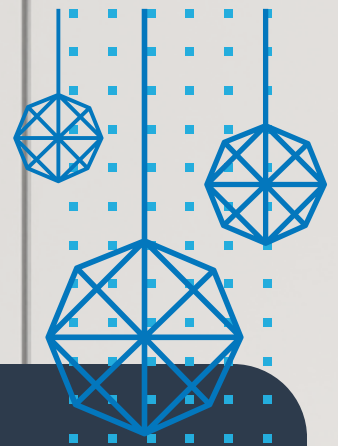
- 2D Layout Plan
- 2D Furniture Plan
- Design Presentation
- Mood Board
- Furniture Layout Plan
- POP False Ceiling Drawings
- Lighting Drawings
- LED Panel Drawings
- Electric Drawings
- Wardrobe Drawings
- Plumbing Drawings
- Vanity Counter Drawings
- Flooring Drawings (Full House)



Time Line

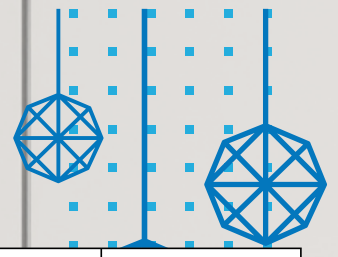


- 7 Days - 1 Room including all drawings
- 11 Days - 2 BHK Home including all drawings
- 14 Days - 3 BHK House including all drawings
- 16 Days - 4 BHK Home including all drawings



Package Price	1 Room	2 BHK	3 BHK	4 BHK
	9999	39999	51999	72999

Drawing & Payment Schedule



Stage	Payment Schedule	Particulars	Drawings Timeline	Site Visits
1.	10 %	Measurements & Pictures	1 Room: 1 Hr 2 BHK: 1.5 – 2 Hrs 3 BHK: 2 – 2.5 Hrs 4 BHK: 2.5 – 3 Hrs	1
2.	25%	<ul style="list-style-type: none"> • 2D Layout Plan • 2D Furniture Plan • Electrical Plan • Plumbing Plan (if any) 	1 Room: 2 Days 2 BHK: 3 Days 3 BHK: 4 Days 4 BHK: 4 Days	2
3.	35 %	<ul style="list-style-type: none"> • POP False Ceiling Drawings • Door Designing • Lighting Drawings • Flooring Drawings (Full House) 	1 Room: 2 Days 2 BHK: 3 Days 3 BHK: 4 Days 4 BHK: 5 Days	2
4.	25%	<ul style="list-style-type: none"> • LED Panel Drawings • Feature Wall Drawings • Wardrobe Drawings • Vanity Counter Drawings 	1 Room: 2 Days 2 BHK: 3 Days 3 BHK: 5 Days 4 BHK: 6 Days	2
5.	5 %	Final (Within 1 Month from Last Drawing)		3